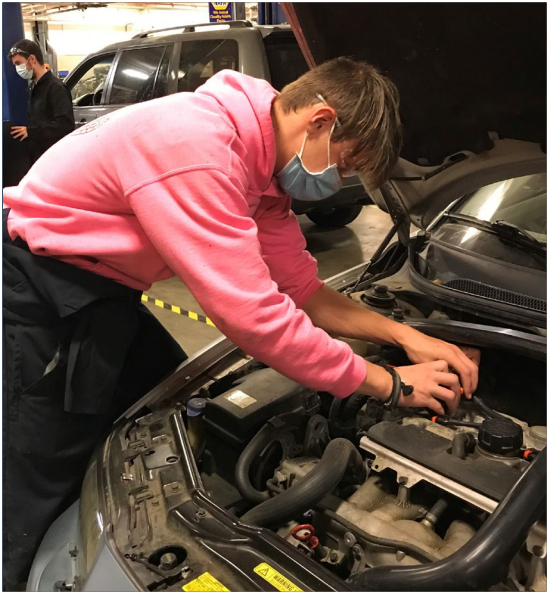


Sno-Isle TECH Skills Center



“Turning Career Dreams into Working Realities”



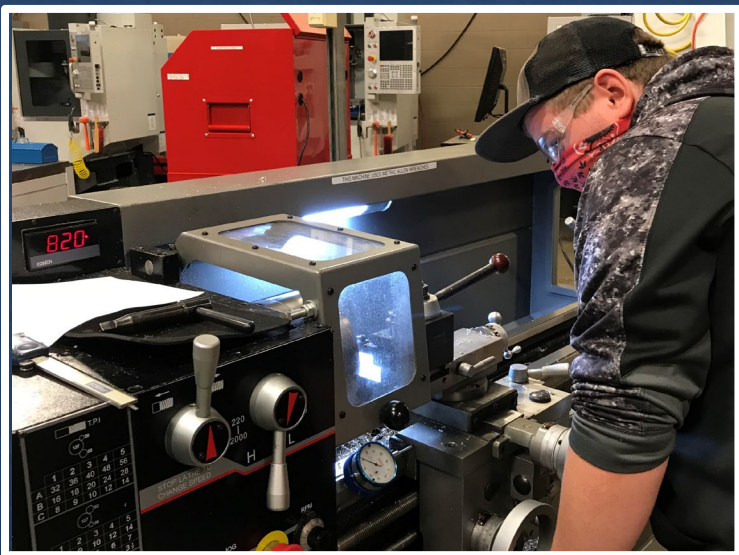
Webinar Agenda

- What is Sno-Isle TECH?
- Sno-Isle TECH during a pandemic
- Application Process
- Website Navigation
- Important Upcoming Dates
- Q&A



Sno-Isle TECH Overview

Sno-Isle TECH provides preparatory training, certification, and post-secondary credit to students, who can then choose to continue their education, go straight to work, or both.



1,000+

Enrolled students per year

Sno-Isle TECH serves Juniors and Seniors from 44 different high schools and 14 districts. Transportation to Sno-Isle TECH is provided by their sending school district's Transportation Department. Students attend one of our two daily sessions. Morning session is from 7:55am-10:25am. Afternoon session is from 11:10am-1:40pm. The remainder of the day is spent at their sending high school.

Available Credits

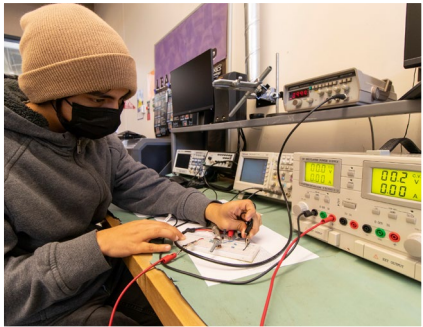
- Earn 3 High School credits per year. Credits may be Elective, CTE or Equivalency credit in some programs.
- Dual College Credit available in many programs via EvCC and PNWCC
- College in High School offered in 1 program
- Successful completion of a Sno-Isle TECH class will satisfy state testing requirements if that class is on your high school & beyond plan



5 Pathways

Information Technology

- Animation
- Computers, Servers & Networking (CSN)
- Electronics Engineering Technology (EET)
- Video Game Design (VGD)



Business & Marketing

- Commercial Baking & Pastry
- Cosmetology
- Culinary Arts
- Fashion & Merchandising



Human Services

- Criminal Justice
- Fire Service
- Technology
- Translation & Interpretation



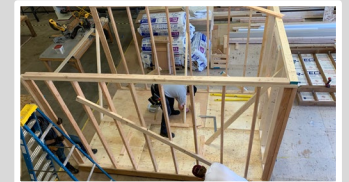
Science & Health

- Dental Assisting
- Medical Assisting
- Nursing Assisting
- Veterinary Assisting



Trade & Industry

- Advanced Manufacturing
- Aerospace Manufacturing & Maintenance Technology
- Auto Body & Collision Repair
- Automotive Technology
- Construction Trades
- Diesel Power Technology
- Welding & Metal Fabrication



22 Programs

<https://snoisletech.com>

How to Apply

APPLY ONLINE ▼

*Application Opens January
13th at 5 PM*

Application for the 2022-2023 school year will open online via our website, Snoisletech.com. You will need a Survey Monkey account, to apply for a Sno-Isle TECH program.



*Attend our Open House
January 13th 6:00- 8:00PM*

An opportunity to meet & speak with teachers, ask questions, and watch demonstrations. This will either be held virtually or in person, watch our website & social media for updates.



*Interview for Program with
Instructor*

Students will come to Sno-Isle TECH for a program shadow day in their chosen program. Teachers will then host interviews after school via Zoom. Interviews will be scheduled with students ahead of time.

Interview Process

The purpose of the interview and program shadow is to give the student and the teacher a chance to determine if the class will be a good fit for the student. The interview is a short conversation between the student and the instructor via Zoom beginning at 2:30 and concluding at 5:30 PM. Interviews will take approximately 10 minutes; students will be pre-scheduled into a 30-minute interview slot.

For questions, please email Theresa Hausmann at
HausmannTA@Mukilteo.Wednet.EDU

What can interested students do now?

- Be a sophomore or junior who is on track to graduate
- Have a good attendance record. Attendance is key at Sno-Isle TECH!
- Be prepared to spend 2.5 hours per day, 5 days a week for a full school year, in a class at Sno-Isle TECH, preparing for your career!
- Register for a Survey Monkey account by clicking on the orange **Apply Now** button at the top right corner of our website homepage. Then click the blue **Register** button at the top right (if you have never used Survey Monkey Apply system) to register for an account with Survey Monkey. Follow the prompts to create your account.
- Save your username and password for Survey Monkey to use when you apply to Sno-Isle TECH, beginning on January 13, 2022.

Important Dates



2022-2023 Application Opens

Application opens at 5:00PM on our website

January 13

Open House

Meet and Q&A with teachers, application assistance, and demos! TBD virtual or in-person, see Website or social media for updates.

January 13

Priority Application Window Closes

Virtual 2022-2023 Student Interviews

February 4

February 23,
24, 28 &
March 1

Virtual Make-up Interviews

March 11 &
18

Notification of 2022-2023 Student Enrollment Status

April 1

Contact Us!

MAKE SURE TO FOLLOW US ON



Facebook.com/SnoIsleTECH



@snoisletech



@Techsno



Sno-Isle TECH Skills Center

#SnoIsleTECH



425.348.2220



SCinfo@Mukilteo.Wednet.EDU or

MillerKB@Mukilteo.Wednet.EDU

We can't wait to hear
from you!

